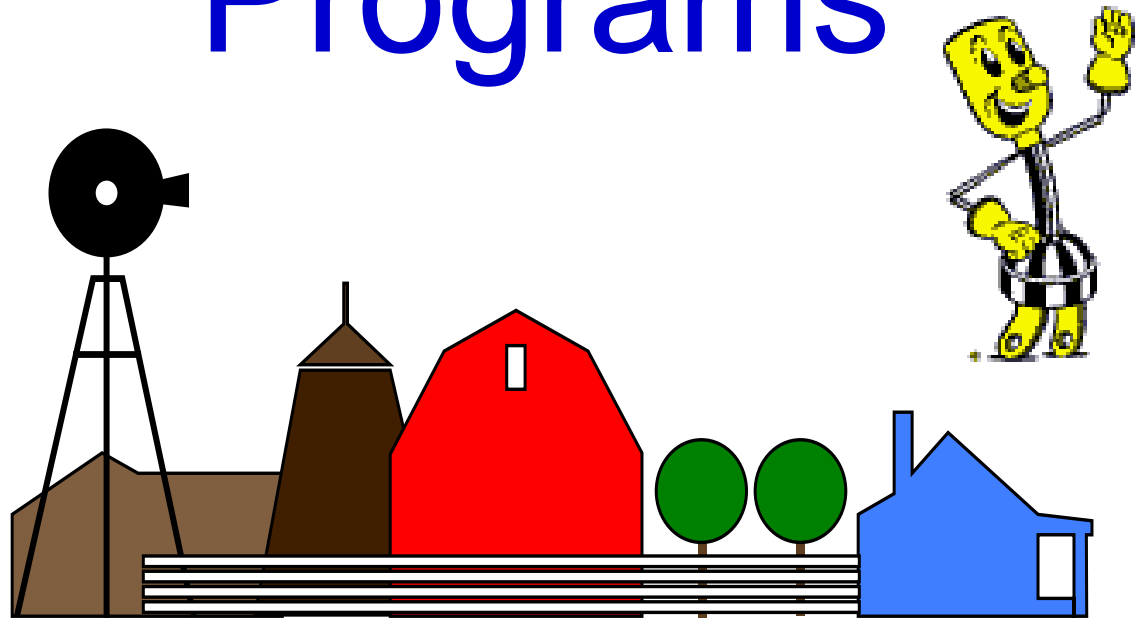
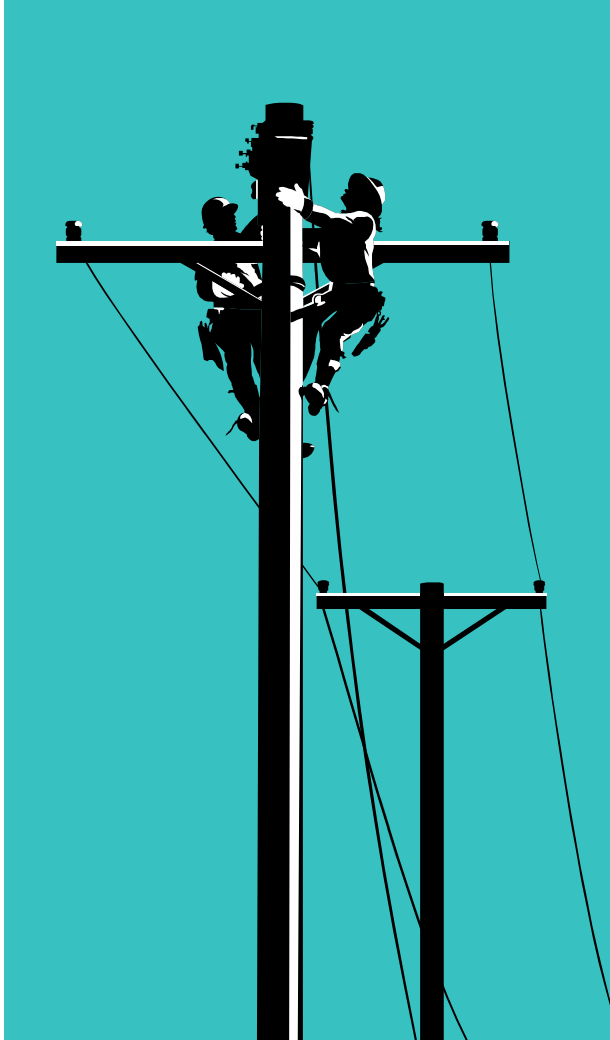


# Rural Development Electric Loan Programs



# HARDSHIP LOAN

- **ELIGIBLE FACILITIES** – Distribution, subtransmission & headquarters (service & warehouse)
- **ELIGIBLE BORROWERS** – Retail providers that meet criteria for rate disparity & whose consumers fall below state per capita & household income levels, or that have suffered a severe, unavoidable hardship, such as a natural disaster, as determined by Administrator
- **INTEREST RATE:** 5 Percent
- **SUPPLEMENTAL FINANCING REQUIRED:** No
- **TERM:** Not to exceed the useful life of the facilities being financed, with a maximum term of 35 years

# MUNICIPAL RATE

- **ELIGIBLE FACILITIES** – Distribution, subtransmission & headquarters (service & warehouse)
- **ELIGIBLE BORROWERS** – Retail providers for all facilities; power supply providers for subtransmission & headquarters facilities
- **INTEREST RATE:** Established quarterly based on interest rates available in the municipal bond market for similar maturities; rate determined at the time of each advance
- **SUPPLEMENTAL FINANCING REQUIRED:** Yes (either 10%, 20%, or 30%) except in the case of financial hardship as determined by Administrator & the first loan following a merger or consolidation
- **TERM:** Not to exceed useful life of the facilities being financed, with a maximum term of 35 years. Power supply borrowers' loan term is also based on the term of its wholesale power contracts with members

# TREASURY RATE

- **ELIGIBLE FACILITIES** – Distribution, subtransmission & headquarters (service & warehouse) & renewable generation
- **ELIGIBLE BORROWERS** – Retail providers for all facilities; power supply providers for renewable generation facilities
- **INTEREST RATE:** Established daily by United States Treasury; rate determined at the time of each advance
- **SUPPLEMENTAL FINANCING REQUIRED:** No
- **TERM:** Not to exceed useful life of facilities being financed, with a maximum term of 35 years. Power supply borrowers' loan term is also based on the term of its wholesale power contracts with members

# FEDERAL FINANCING BANK (FFB) GUARANTEED

- **ELIGIBLE FACILITIES** – Distribution, transmission (bulk & sub-transmission) & headquarters (office, service & warehouse), generation
- **ELIGIBLE BORROWERS** – Retail and power supply borrowers
- **INTEREST RATE:** Established daily by United States Treasury; rate determined at time of each advance. 1/8 of 1% administrative fee added to base rate
- **SUPPLEMENTAL FINANCING REQUIRED:** No
- **TERM:** Not to exceed useful life of the facilities being financed, with a maximum term of 35 years. Power supply borrowers' loan term is also based on the term of its wholesale power contracts with members

# Contact Information

Eric Marchegiani – Public Utilities Specialist

USDA – Rural Utilities Service

907-688-8732 Office

907-244-2788 Cell

888-655-3357 Fax

[Eric.Marchegiani@wdc.usda.gov](mailto:Eric.Marchegiani@wdc.usda.gov) Email