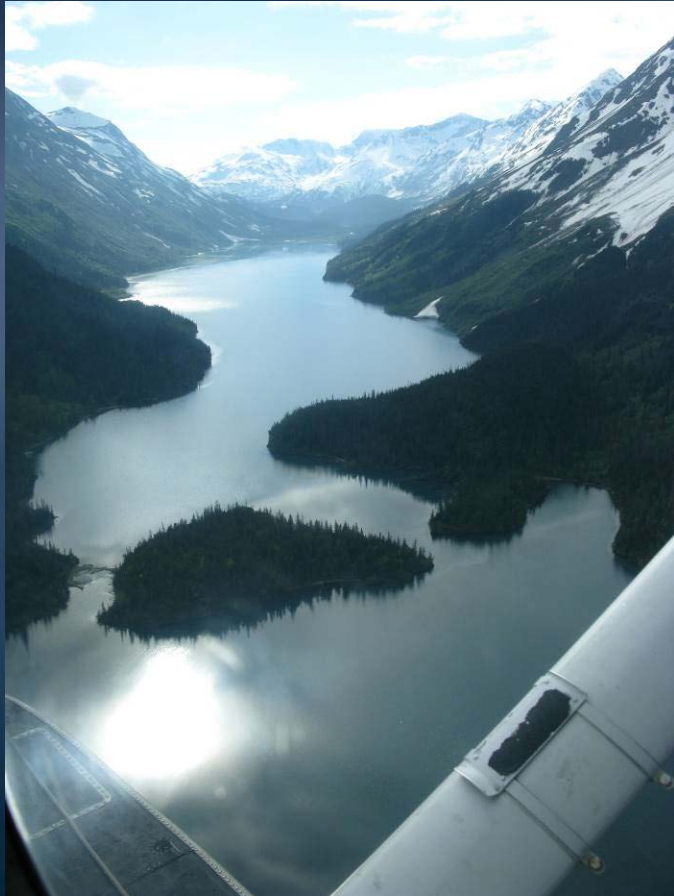


Grant Lake/Falls Creek Hydro

Unique Project Challenges & Opportunities



Kenai Hydro, LLC
NHA Alaska Regional Meeting
March 11, 2010
Brad Zubeck

Project Acknowledgements

- Long View Associates

- Steve Padula
- Jenna Borovansky



- HDR Alaska, Inc.

- Bob Butera, Paul Berkshire
- Paul McLarnon



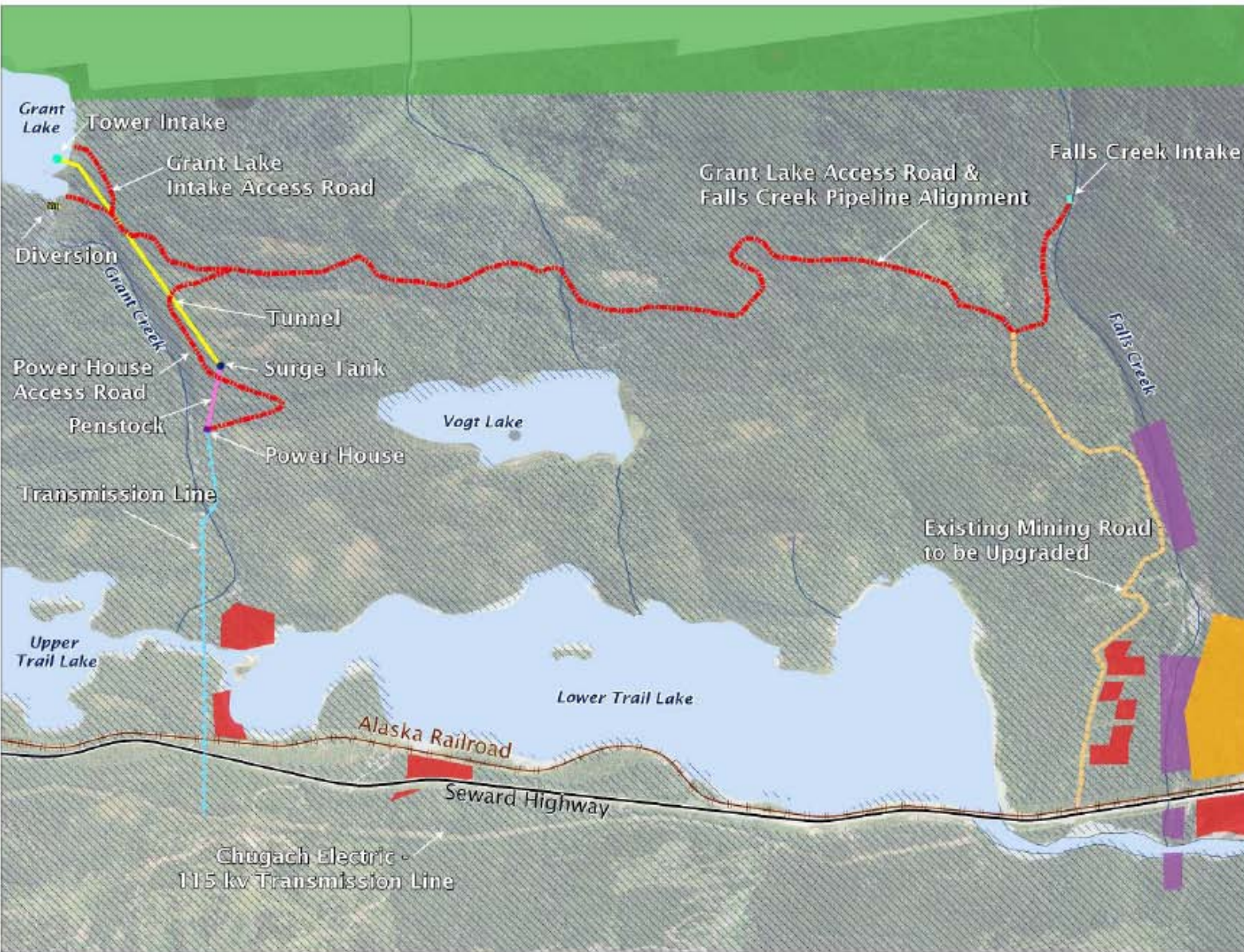
- Alaska Energy Authority

- Doug Ott

Proposed Project Facilities

Proposed project facilities and land ownership

Figure 3.2



Project Features

- Intake
- Power House
- Access Road
- Diversion
- Existing Mining Road
- Penstock
- Transmission Line
- Tunnel

Land Ownership

- State
- ARRC
- BLM
- USFS
- Private
- Seward Highway
- Alaska Railroad

Scale: 0 to 2,000 Feet

Orientation: NORTH

Map Projection: NAD 83 ASP Zone 4 Feet
 Data Sources: HDR Alaska, Aerometric, Lounsbury and Associates, Kenai Peninsula Borough, AK DNR, USFS
 Author: HDR Alaska, Inc.
 Date: 27 July 2009

These maps are for review purposes only.



Chugach Electric - 115 kv Transmission Line

Unique Project Elements

- Hybrid pre-licensing process - TLP + Early Scoping
 - Facilitated by early communication with agencies & public
 - Made possible by FERC flexibility & responsiveness to input from all parties
- Potential to Improve the Fishery
 - Increased, reliable winter flows may improve survivability
 - Need hydro community to share similar successes

Unique Project Elements (cont.)

- **Competing Mandates**
 - Green Energy vs. Other Environmental Interests
- **Project Location Outside of Utility Service Area**
 - Challenge for a small project in an small community to bring big local benefit
- **Comments, Suggestions or More Info:**
 - Brad Zubeck, Homer Electric Association
 - bzubeck@homerelectric.com
 - www.kenaihydro.com