

Bartletts Ferry Hydro

Applying ILP Lessons Learned



Georgia Power
Company



Steve Layman, PhD



NHA Southeast Regional Meeting
December 3, 2008

Bartletts Ferry Hydro

- River mile: 177.9
- Capacity: 173 MW (6 units)
- Operation: modified ROR
- Surface area: 5,850 acres
- Shoreline: 156 miles
- License expires: Dec 14, 2014

AL

Lake Harding

GA

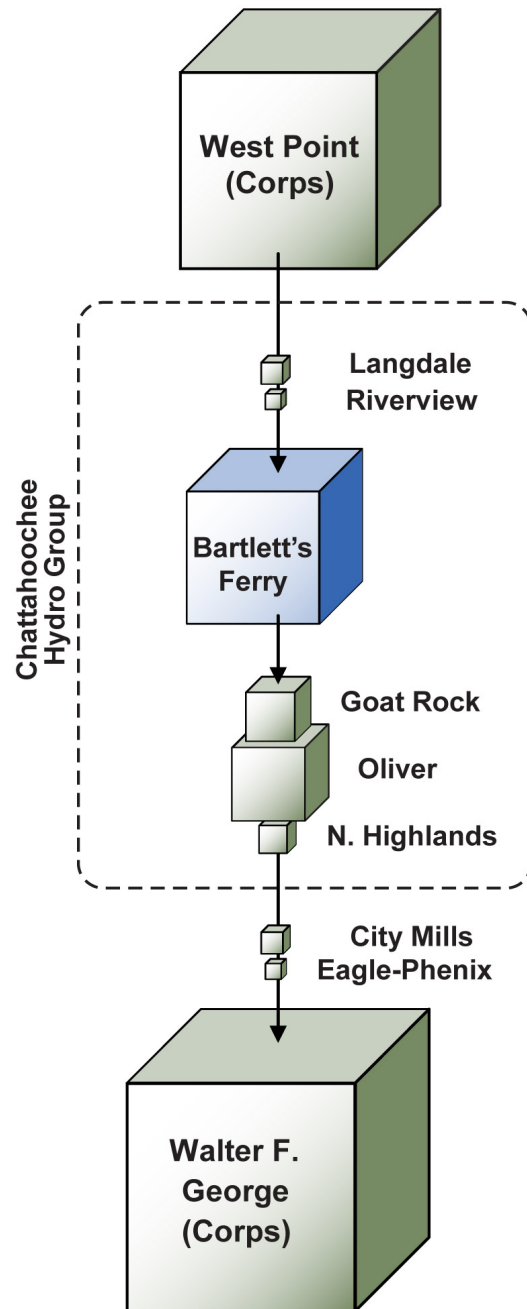
Bartletts Ferry Dam

West Powerhouse (Units 1 - 4)

East Powerhouse (Units 5 & 6)

Goat Rock Lake





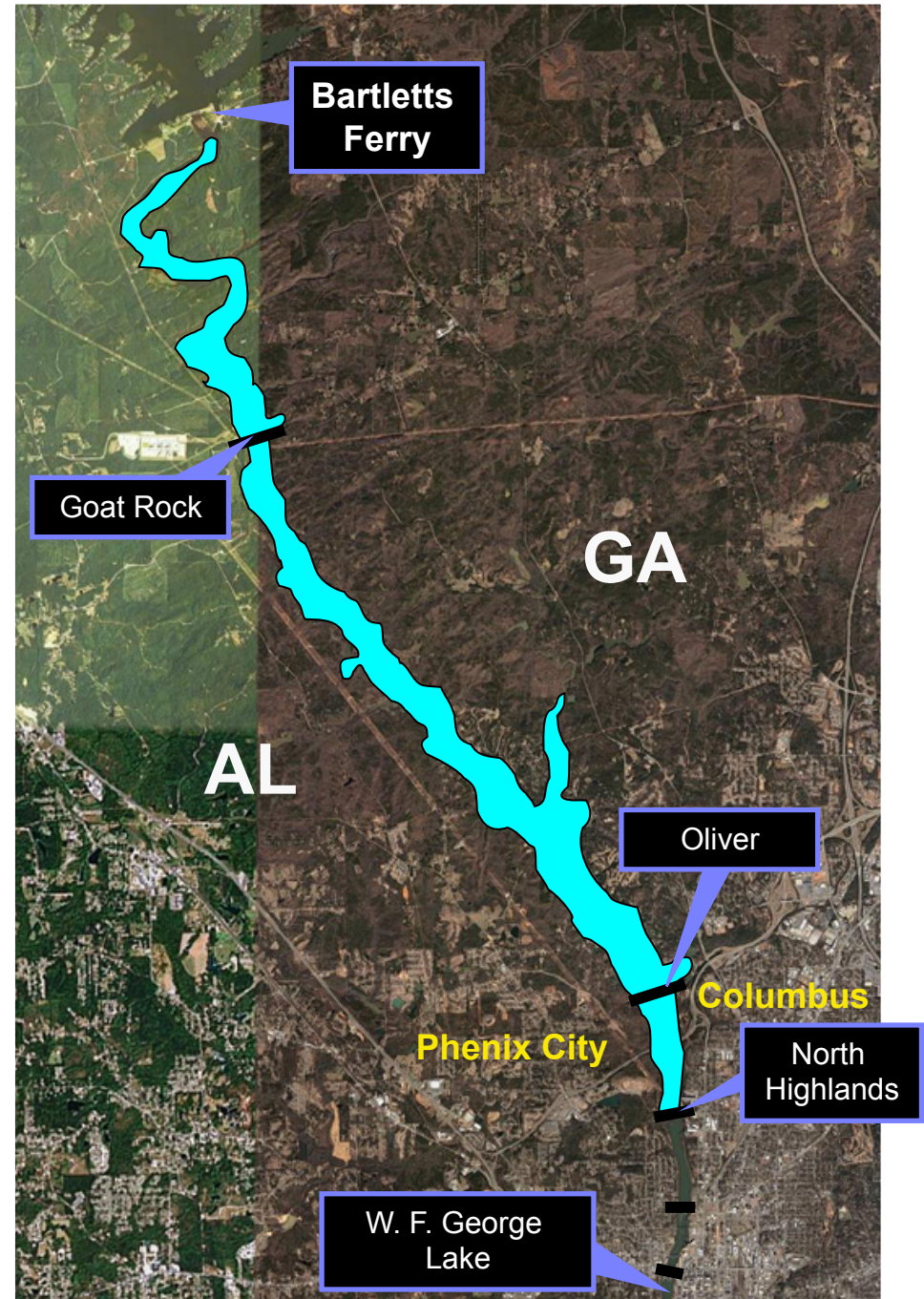
EY042008001ATL

Large Corps reservoirs in the ACF Basin drive Bartletts Ferry operations

- Corps reservoirs comprise 96% of total usable storage on the Chattahoochee River
- Bartletts Ferry contains only 3.4% of the total usable storage
- West Point Dam controls 85% of the project inflow
- West Point releases vary from 600-800 cfs minimum flow to 18,000 cfs peaking flow

Downstream

- Middle Chattahoochee Project extends 15.4 river miles downstream to Columbus
- New license establishes minimum flow targets
- Corps dams impound lower 160 miles of Chattahoochee River to Florida line



Potential Resource Issues

Water Quality & Flow



2008. Alabama Wildlife 28(1):28-29.

SHOAL BASS OF ALABAMA: From Prolific to Protected



By Mike Macdonald and David Stormer, Department of Fisheries, Auburn University

Recreational Opportunities



Fisheries



Shoreline Management



RTE Species



Key relicensing challenges

- Engaging a diverse group of interstate stakeholders
- Educating stakeholders early regarding project operations
- Building a technically strong project record
- Minimizing costs & risks of resource studies while managing stakeholder expectations
- Insulating NEPA scoping and study plan development from interstate issues lacking any direct nexus with the project
- Achieving reasonable operating terms and conditions that preserve power benefits and flexibility of project operations

ILP Lessons Learned

- Communicate early and often with stakeholders to elicit resource management goals and objectives, and existing information
- Take time to educate stakeholders on project operations
- Prepare PAD as foundation for applying study criteria in Study Plan
- Apply sound science to support successful agreements

Study Criteria Applied in Director's Determinations for Morgan Falls		
<i>Study Criteria</i>	<i>Dispute Resolution</i>	<i>Additional Study Requests</i>
§ 5.9(b)(2) – Relevant resource management goals	X	
§ 5.9(b)(4) – Existing information	X	X
§ 5.9(b)(5) – Nexus between project operations & effects	X	X
§ 5.9(b)(7) – Level of effort & costs		X

Strategies for advancing stakeholder trust

- Establish a user-friendly website from the outset
- Prepare and distribute an Operations Primer
- Hold a workshop on the Operations Primer and ILP
- Distribute a PAD questionnaire to facilitate input
- Engage stakeholders in early discussions
- Offer multiple days of Study Plan meetings & PLP meetings

The PAD sets the stage for Study Plan development

- Be diligent in gathering relevant existing information
- Effective data presentation helps establish adequacy of existing information for analyzing resource issues
- Address all PAD content requirements
- Detailed study outlines narrow issues and build trust
 - Better focus stakeholder comments and study requests
 - Relieve stakeholders from writing their own study requests
 - Enhance efficiency in filing Proposed Study Plan

Sound-science approach facilitates stakeholder consensus and FERC acceptance

- Requires building a strong technical project record
- Strengthens effective use of ILP study criteria
- Supports informal resolution of study disagreements
- Strengthens position in formal study dispute resolution
- Moves bar higher for study plan modifications (good cause) and new study requests (extraordinary circumstances)
- Improves prospects in EPCAct trial-type hearing
- Facilitates reaching more favorable agreements

ILP Principles

- Communicate early and often with stakeholders and FERC
- The PAD is the foundation for study plan development
- Define and narrow the nexus
- Maximize the use of relevant existing information
- Manage study plan development to the study criteria
- Build a strong technical record throughout the proceeding
- Document, explain, and justify each step of the way
- Sound science facilitates resolution of difficult issues