

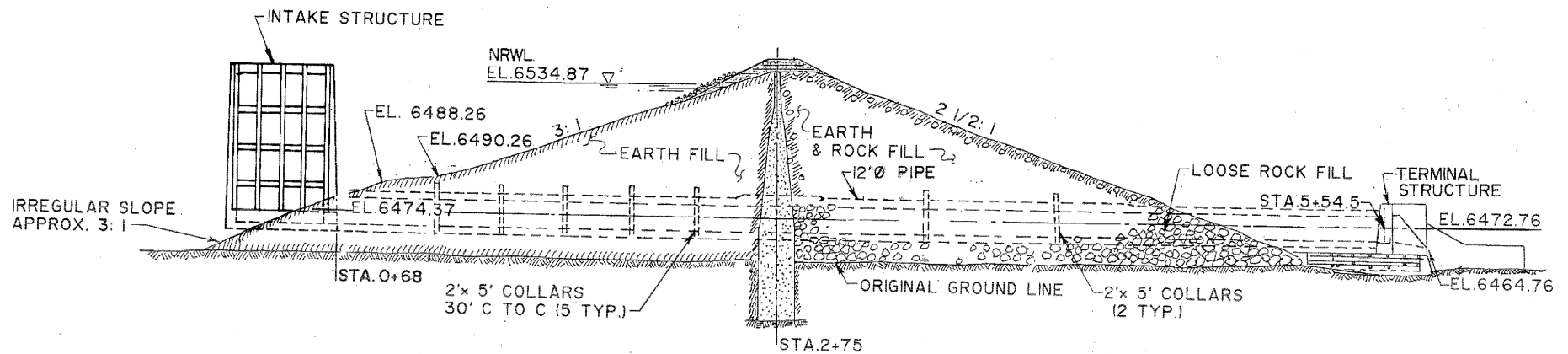
Hebgen Intake



Hebgen Outlet

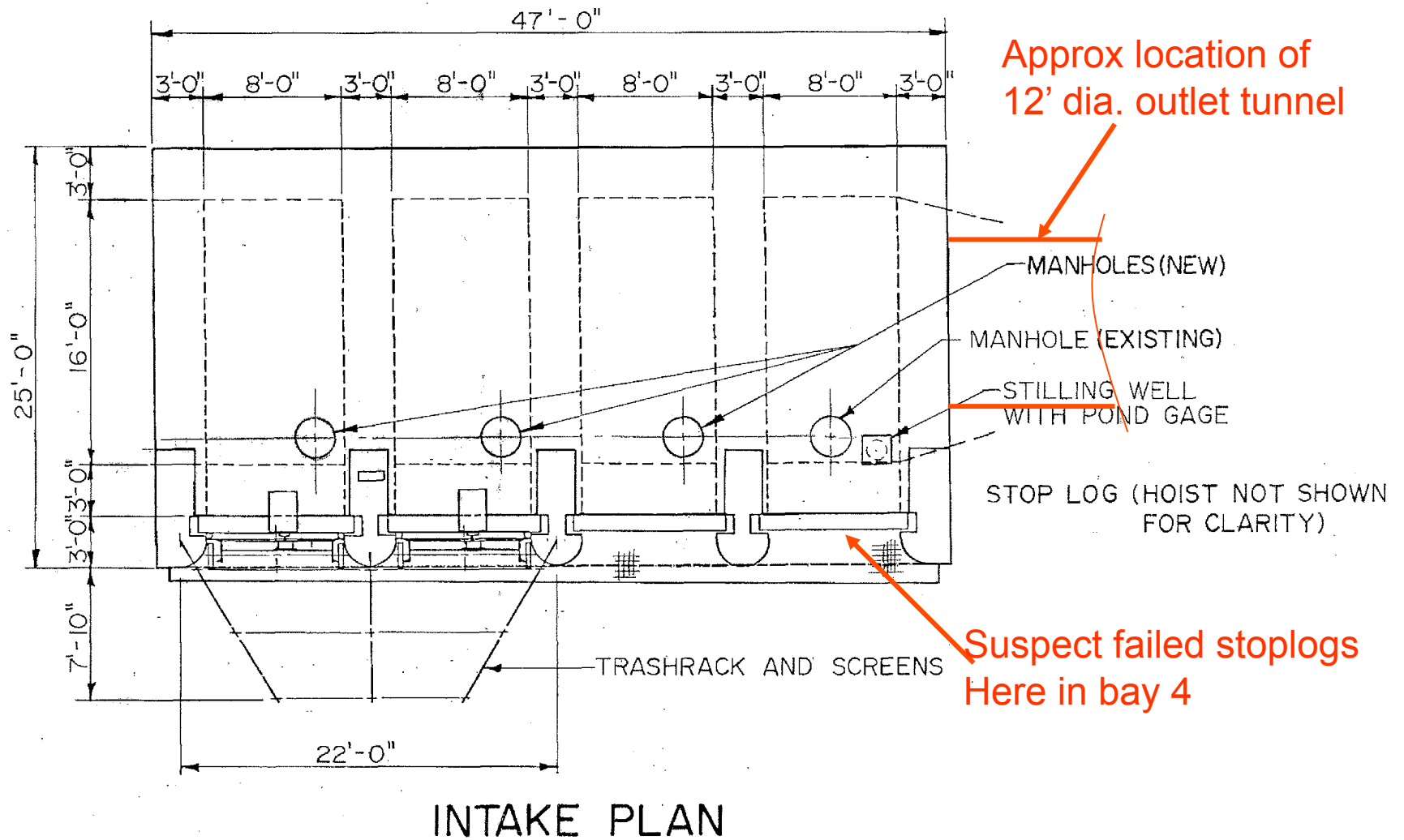


Cross Section of Dam

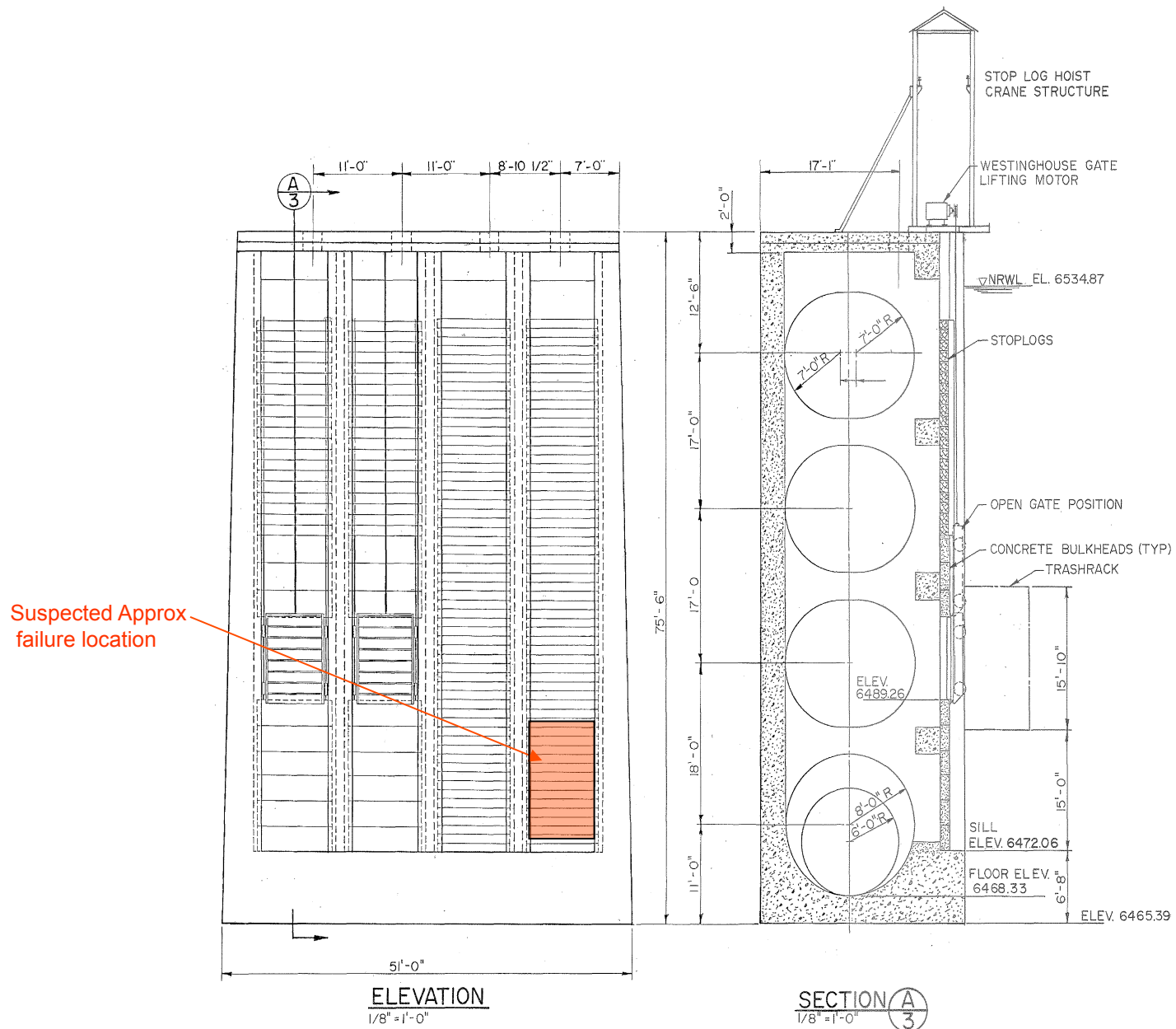


CROSS-SECTION OF DAM AT STA. 5+00

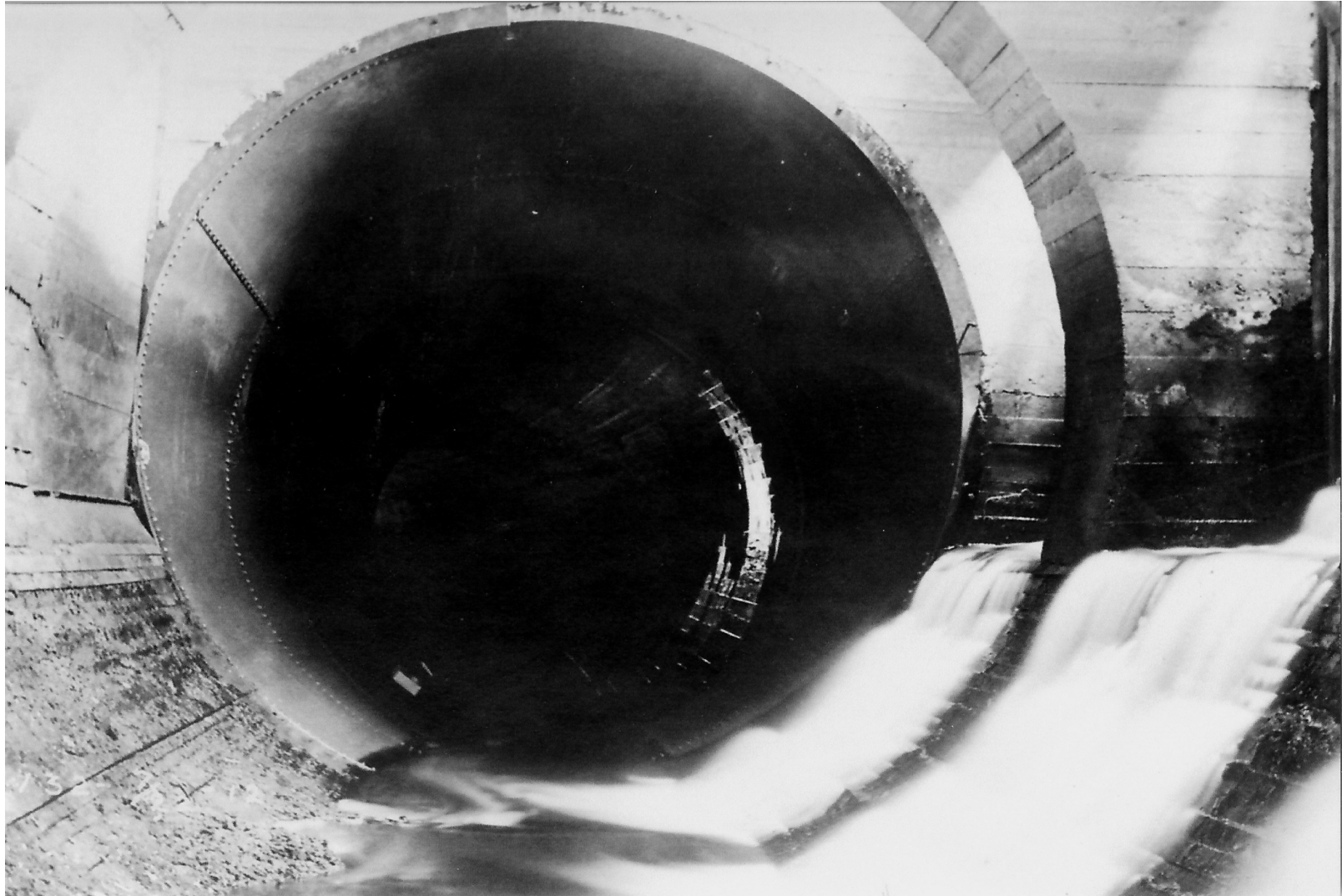
Intake Plan View



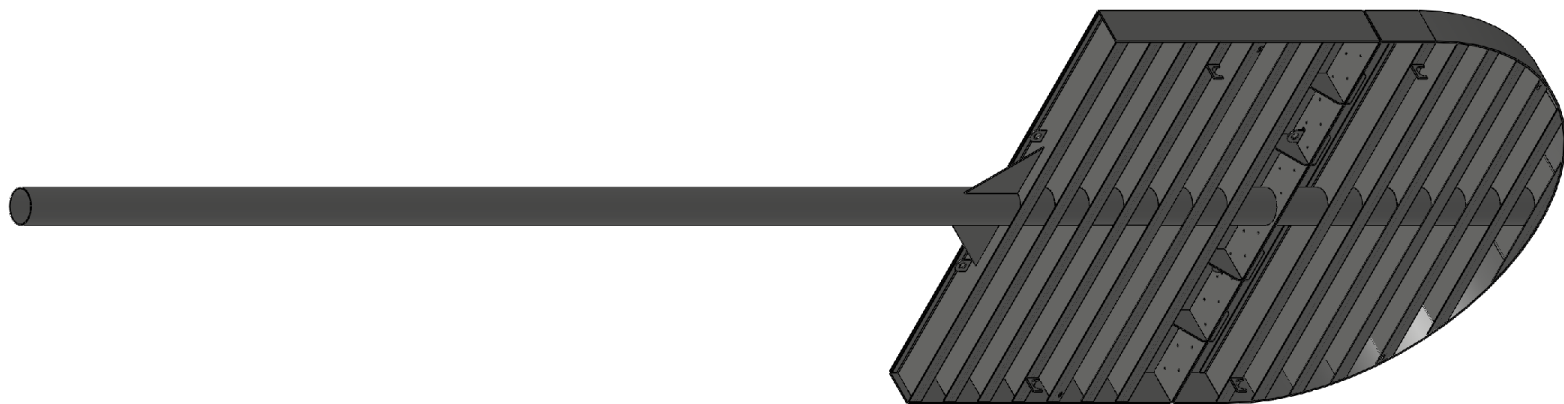
Intake Elevation View




Intake Interior (where bulkhead goes)



Bulkhead Concept



REV	DATE	APP'D	DESCRIPTION
SCALE:	--	DATE	DRWN BY: K.M.K.
 ANACONDA FOUNDRY AND FABRICATION COMPANY 1015 EAST SIXTH STREET ANACONDA, MONTANA 59711			
CUSTOMER:			
TITLE:			
CUSTOMER NUMBER	JOB NUMBER	DRAWING NUMBER	REV.
--	--	--	A

INFORMATION AND COMMENTS:
FOR INFORMATION OF CUSTOMER, THIS
DRAWING IS NOT A FINAL DRAWING OF
ARTICLE, AND SPECIFICALLY FOR THE
USE OF ANACONDA FOUNDRY AND FABRICATION
COMPANY OF ANACONDA, MONTANA.

Bulkhead-Shaft Assembly

